



CLAREA LUX

Resurfacing night cream – new skin effect

Thanks to the exfoliating properties of the alpha hydroxy acids (AHAs), which free the skin from dead cells, CLAREA LUX smoothes, lightens and refines skin, restoring all of its luminosity and freshness. It will immediately seem as though the signs of time have been removed and skin will be wonderfully restructured and bright.



Principal Ingredients

AHA Glycolic Acid: peeling performed using glycolic acid stimulates cell renewal and collagen and elastin synthesis, adding tone and elasticity to skin.

Lactobionic Acid: a polyhydroxy acid with a strong moisturising effect.

Its antioxidant properties stimulate cell renewal and lighten dark spots caused by photo-ageing.

Biological extract of Buddleja: rich in flavonoids, it has antioxidant, antiradicalic and anti-ageing properties.

Betaine: tiny molecule with a high level of penetration, moisturises skin deep down, adding elasticity and firmness.

For whom and how

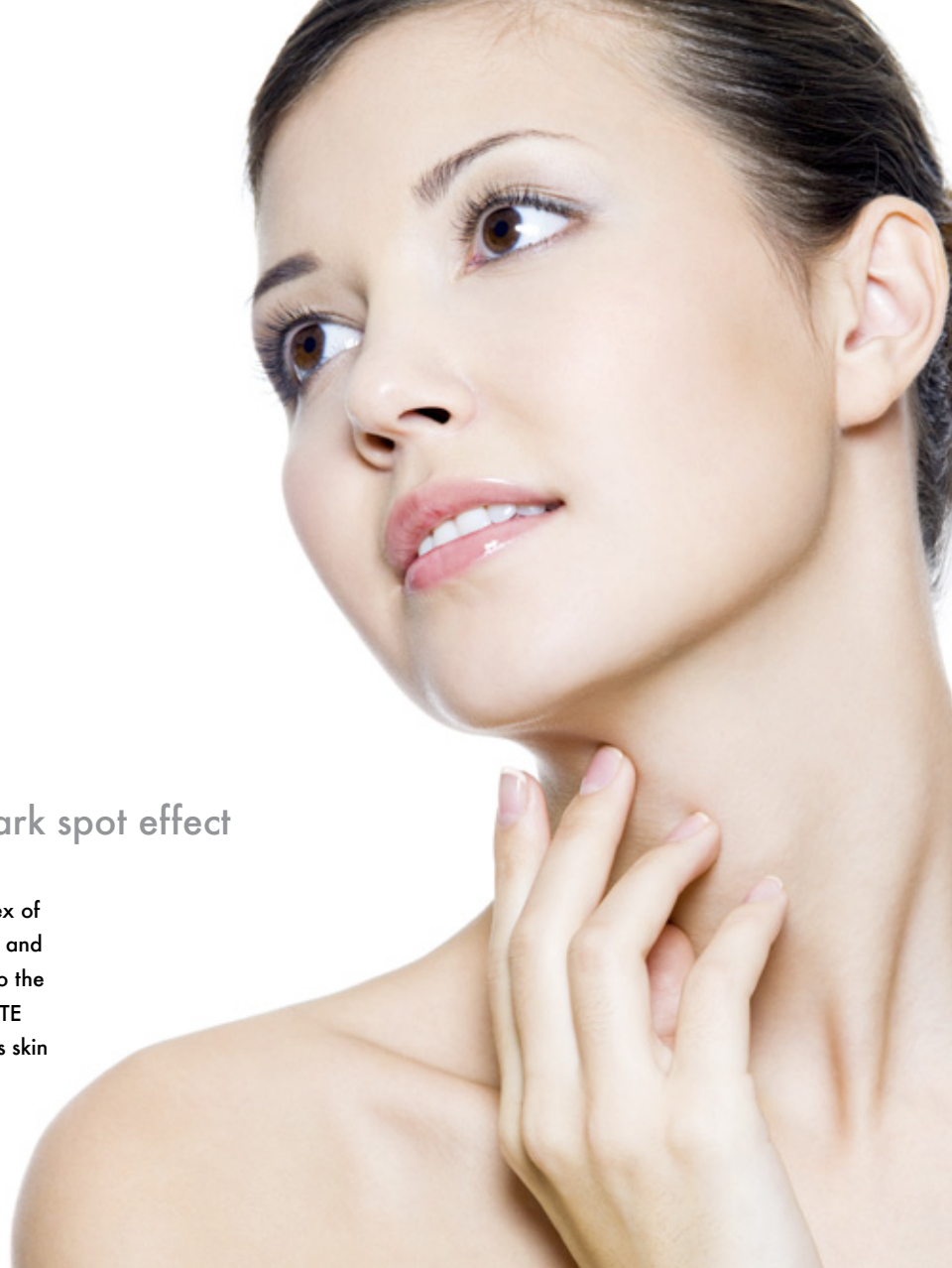
Thanks to the combined action of the alpha hydroxy acids, otherwise known as AHAs, and other precious phyto extracts, CLAREA LUX works in three ways that are fundamental for skin renewal: it offers gentle, natural exfoliation, it regenerates and stimulates, it guarantees deep hydration. Apply in the evening to face, neck and décolletage; cleanse skin thoroughly before applying. Avoid the area around the eyes. CLAREA LUX contains AHAs that are likely to increase the skin's sensitivity to UV rays; apply a day cream with sunscreen and avoid exposure to the sun when using the product and for the following four weeks.



CLAREA WHITE

Lightening night cream – anti-dark spot effect

This highly concentrated night cream contains a complex of natural extracts which help to control melanin synthesis and develop a deep, overall, anti-dark spot effect. Thanks to the dual exfoliating and regenerating effect, CLAREA WHITE lightens skin, stops the pigmentation process and leaves skin brighter and more luminous.



Principal Ingredients

Halidrys Siliquosa: an extract of brown algae that acts on the melanin synthesis for an overall and direct effect on dark spots.

Extracts of Willow, Pineapple and Vitamin C, having lightening, antioxidant and anti-ageing properties.

For whom and how

Lightening and adding radiance helps to give the face a more youthful appearance again.

Revitalized, visibly lighter and fresher, the skin is rejuvenated and wonderfully relaxed. In just 4 weeks of daily application the complexion appears more even and pure. For powerful action on dark spots, a treatment of 10/12 weeks is recommended.

Cleanse the skin thoroughly, then apply in the evening to face, neck and décolletage



CLAREA DAY

Anti-age vitamin day cream - SPF 15

Multipurpose day cream, CLAREA DAY enhanced with vitamins which have powerful anti-age and anti-oxidant properties.

This cream revitalizes tissues, prevents the appearance of lines and wrinkles and the loss of skin elasticity, CLAREA DAY hydrates and protects skin thanks to a special sun filter of the very latest generation.

Thanks to its innovative, fine, velvety texture, CLAREA DAY is also an excellent base for make-up.



Principal Ingredients

It contains: Vitamin E and Provitamin A, which have powerful anti-age and anti-oxidant properties,

It prevents skin aging through a special solar filter which protects the skin from both UVA and UVB rays.

For whom and how

For all skin type. Regenerating and enriched with vitamin, CLAREA DAY hydrates and protects skin from UVA and UVB rays, which are the main cause of premature skin ageing.

Apply in the morning to face, neck and décolletage to the clean skin. Thanks to its fine texture, CLAREA DAY is Excellent base for make-up.